

ALFA

70.00m Benetti 2020



CECIL WRIGHT

ALFA

BUILDER: BENETTI

YEAR BUILT: 2020

LOA: 70.00M



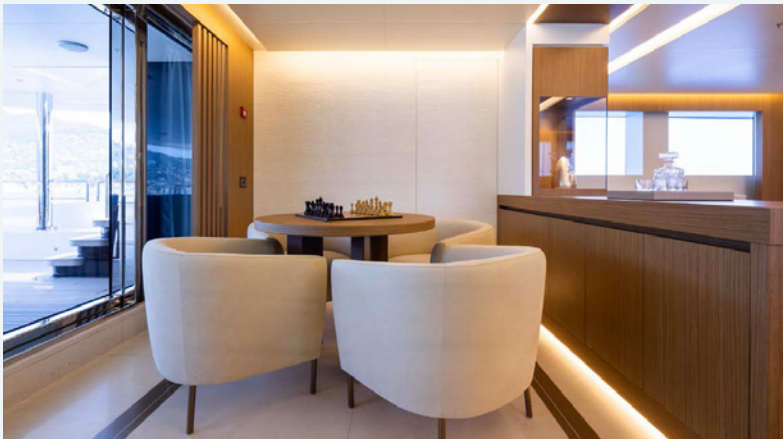
Main Salon





Main Dining Area





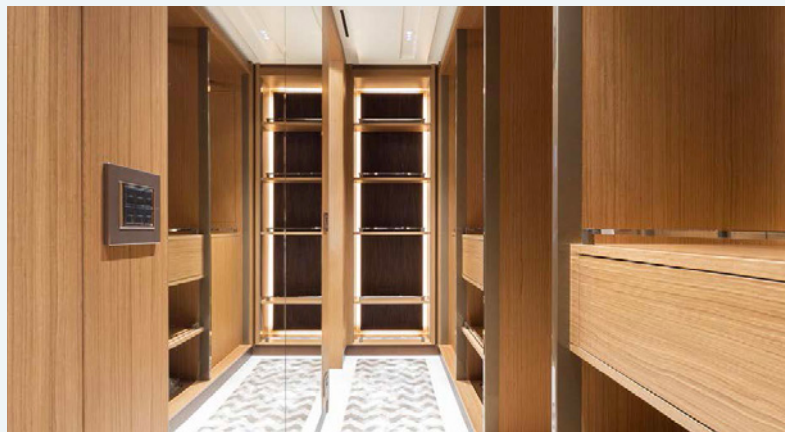
Lounge



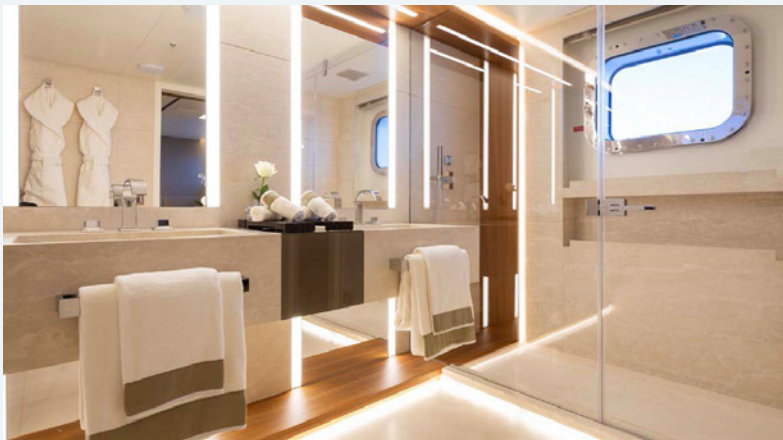
Lounge



Master Stateroom



Master Stateroom Office, Wardrobe & Bathroom



Guest Cabins



Guest Cabins



Gym & Spa



Exterior Decks



Exterior Decks



Exterior Decks



Exterior Profile

ALFA



Exterior Profile





Exterior Profile



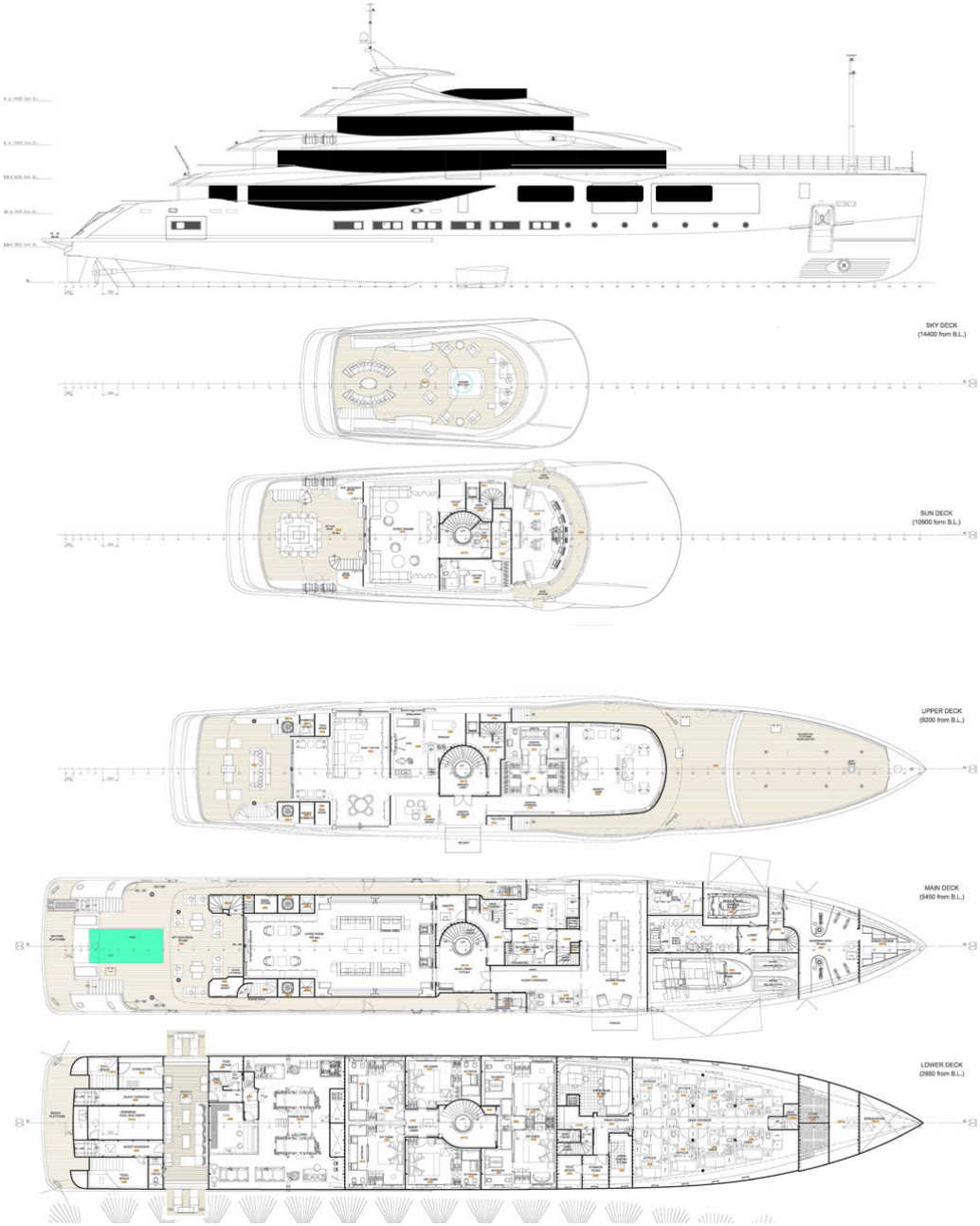
Specifications

Main Characteristics

| | |
|------------------------|-----------------------|
| NAME: | ALFA |
| TYPE: | MOTOR YACHT |
| BUILDER: | BENETTI |
| NAVAL ARCHITECT: | AZIMUT BENETTI S.P.A. |
| EXTERIOR DESIGNER: | AZIMUT BENETTI S.P.A. |
| INTERIOR DESIGNER: | LAURA POMPONI |
| INTERIOR EXECUTION: | YACHTLINE |
| YEAR: | 2020 |
| FLAG: | CAYMAN ISLANDS |
| CLASSIFICATION: | BUREAU VERITAS |
| COMMERCIAL COMPLIANCE: | MCA LY3 |
| HULL NO: | FB273 |
| LOA (M/FT): | 70 M 229'08" |
| LWL (M/FT): | 66.5 M 218'02" |

| | |
|--------------------------|---|
| BEAM (M/FT): | 10.6 M 34'09" |
| DRAFT (M/FT): | 3.4 M 11'02" |
| GROSS TONNAGE: | 1,442 GT |
| DISPLACEMENT: | 1,267 T |
| HULL MATERIAL: | STEEL |
| SUPERSTRUCTURE: | ALUMINIUM |
| DECKS: | TEAK |
| MAIN ENGINES: | 2 X CAT 3512C HD 1765KW 1800RPM |
| MAX SPEED: | 17 KNOTS (APPROX.) |
| CRUISING SPEED: | 13 KNOTS (APPROX.) |
| RANGE: | 5,000 NM |
| GUEST ACCOMMODATIONS: | 1 MASTER STATEROOM + 4 DOUBLE STATEROOMS + 2 TWIN STATEROOMS |
| CREW ACCOMMODATIONS: | 15 CREW + 2 STAFF |
| VAT: | NOT PAID |

Specifications



CECIL WRIGHT

LONDON

73 St James's Street
London
SW1A 1PH
Tel: +44 20 7408 1001

MONACO

Le Mirabel
4 avenue des Citronniers
MC 98000 Monaco
Tel: +377 97 98 76 60

JERSEY

Le Vallon,
Les Ruisseaux, St Brelade,
Jersey JE3 8DD
Tel: +44 20 7408 1001