



SIREN

Length: 73.50 metres (241' 2")

Beam: 12.60 metres (41' 4")

Draft: 3.6 metres (11' 10")

Number of Guests: 12

Number of Crew: 18

Built: 2008

Refit: 2018

Builder: Nobiskrug

Naval Architect: Newcruise

Hull Material: Steel

Hull Configuration: Displacement

Superstructure: Tri-deck +

Stabilisers underway, Stabilisers at anchor, Air conditioning, Elevator/lift, Approved RYA water sports centre, WiFi connection, Gym/exercise equipment

SIREN is an exquisite blend of elegance and luxury. Cool, muted tones meet sleek, sophisticated lines. The finest finishes of French oak, maple, silk and natural stone complement the spacious indoor and outdoor living areas and luxurious accommodation. A 73.5m yacht with a timeless and elegant profile; the embodiment of function and form in perfect accord.

The beautifully appointed main saloon combines a stately aesthetic with a welcoming sense of place. At 18m long by 9m

at its widest, space is generously apportioned between the dining room and the salon. Concealed macassar shoji screens glide seamlessly into place at a touch, while floor to ceiling bay windows maintain the wider sense of place and perspective.

Light and space are the hallmarks of the master stateroom. Clean lines and subtle accoutrements, such as the pearl embroidered bedspread give it a stylish eminence. This is a room that revels in its secrets. The adjoining study wall swings open to reveal a balcony, and within the opposite wall a foldaway double bed.

All four guest cabins on the lower deck share the same dedication to clean lines and beguiling textures, each has its own unique character. These spacious cabins feature bleached maple walls and limestone clad en suites, while the double cabin on the bridge deck features the most expansive views.

The beach club gym allows guests to be put through their paces with the on board personal trainer, or to simply enjoy relaxing spa treatments with SIREN's spa therapist. For more genteel activities try sun worshipping around the spacious sun deck jacuzzi with sumptuous cushioned surfaces. Alternatively, relax in front of a film or major sporting event on the big screen,

Key Features

- 1** Capacity to download and print daily newspapers
- 2** Elevator from lower deck to bridge deck
- 3** On board masseuse, Pilates instructor, hair stylist and make-up artist
- 4** Private fold-out balcony in the master suite
- 5** Indoor and outdoor cinemas
- 6** Flexible accommodation can provide 6 double cabins when required
- 7** Great selection of water sports equipment
- 8** Beach club/gym



Main saloon



Dining saloon



Master suite



Master suite office



Master suite office with additional fold-out bed



Master suite balcony



Master suite balcony



Main deck aft



Bridge deck cabin



Double cabin



Double cabin



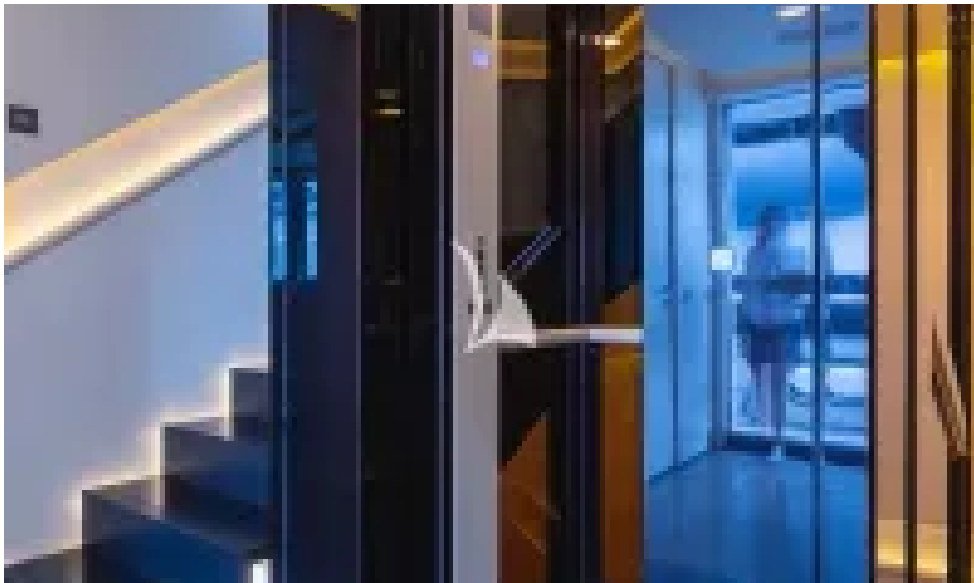
VIP guest cabin



Convertible cabin set up as twin



Convertible cabin set up as double



Elevator



Cinema



Sky lounge



Bridge deck dining



Breakfast buffet



Teppanyaki grill



Sun deck pool



Sun deck - Crow's nest



Outdoor cinema



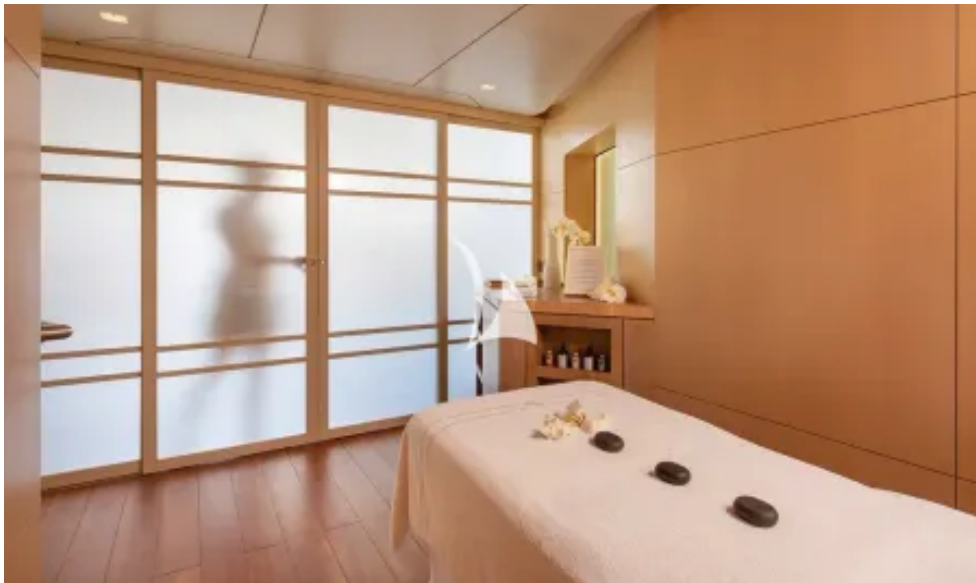
Detail



Sunset



Gym/beach club



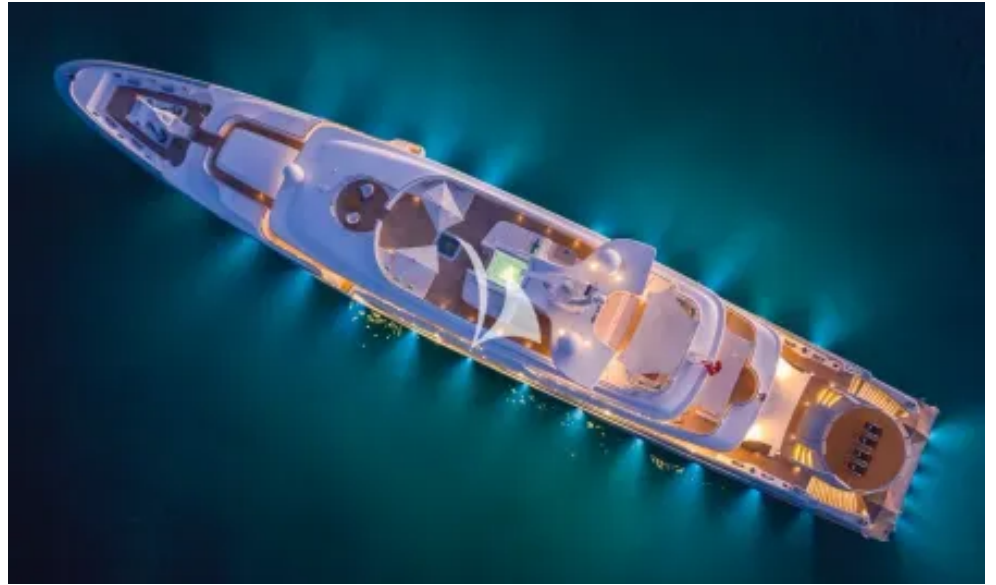
Spa treatments salon



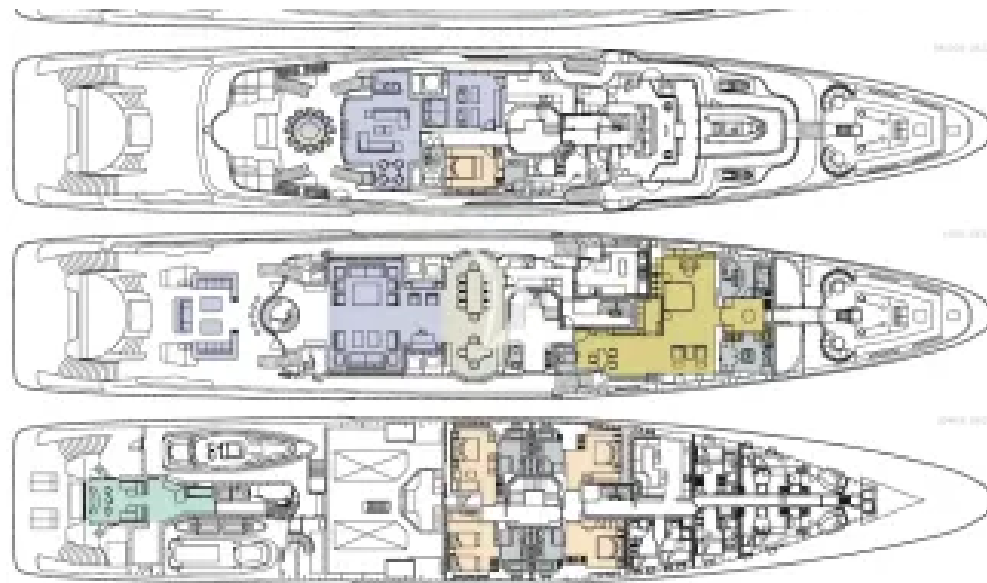
Aquapark



Watersports fun



Bird's eye view



GA

SPECIFICATIONS

ACCOMMODATION

Number of guests: 12

Number of cabins: 6

Cabin configuration: 5 Double Cabins, 1 Convertible Cabins

Bed configuration: 1 Pullman Beds, 1 King Beds, 4 Queen Beds, 2 Single Beds

EQUIPMENT

Engines: Main engines - 2 x MTU 16V4000 M60 2,360 bhp (1760 KW) each at 1,800 rpm 2 x 252kW MAN D2876 LE 301 Generators 1 x 17kW MAN D2866 LXE 30 Generator 1 x 1125kW MAN Emergency generator
Generator fuel consumption at anchor - approximately 1,000 litres/day

Cruising Speed: 14 knots

Fuel Consumption: 650 Litres/Hr

WATERSPORTS

Tender + Toys: Tenders:

10m Royal jet drive tender with 2 x 260hp engines

7.6m Ribeye Beachlander tender with 225hp outboard engine

Toys:

2 x Yamaha VX180 Cruiser HO waverunners

2 x F5S Seabobs

Zapata Flyboard

2 x Fliteboard eFoil

2 x Hobie stand up pedal boards

2 x stand up paddle boards

Wakeboards, waterskis & tows

Jungle Joe climbing frame with slide

3m trampoline

4m x 4m Aquaglide ocean pool (anti jelly fish)

Snorkeling gear

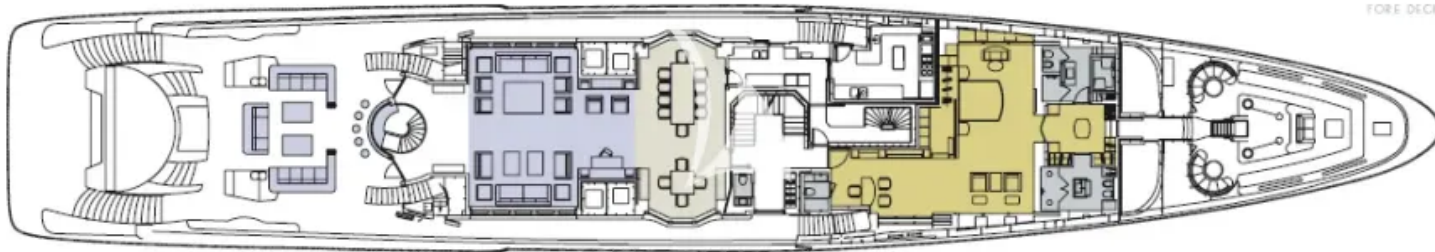
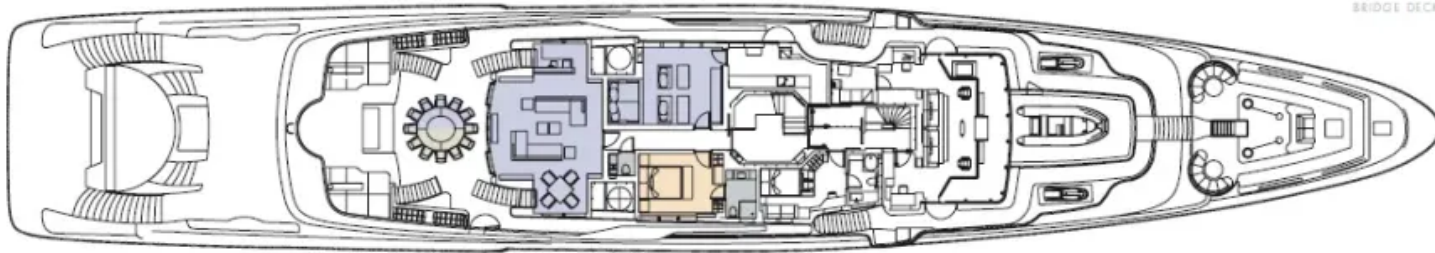
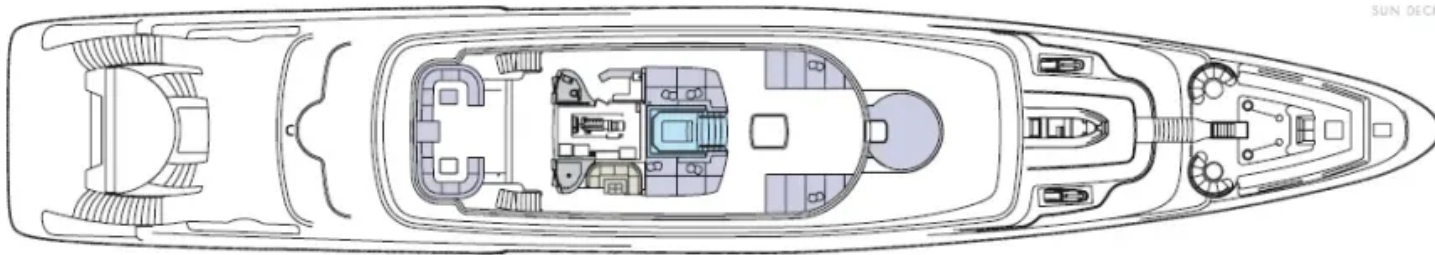
Fishing gear

Scuba diving equipment (6 x sets - rendezvous diving only)

Approved RYA training centre for personal watercraft

Inflatable toys include 2 x donuts, 2 x chariots, and a banana

LAYOUT



KEY

[Light Green Box]	DINING
[Light Blue Box]	LOUNGES - EXTERIOR, INTERIOR, CINEMA
[Light Yellow Box]	MASTER SUITE
[Light Orange Box]	GUEST ACCOMMODATION
[Light Purple Box]	JACUZZI
[Light Grey Box]	BATHROOMS
[Light Teal Box]	GYM/SPA AND BEACH CLUB

Disclaimer

This document is not contractual. All specifications are given in good faith and offered for informational purposes only. The publisher and company do not warrant or assume any legal liability or responsibility for the accuracy, completeness, or usefulness of any information and/or images displayed. Yacht inventory, specifications and charter prices are subject to change without prior notice. None of the text and/or images used in this brochure may be reproduced without written consent from the publisher.